



Load Flow Contingency (N-p)

This module is designed to assist in power flow related static contingency analysis. It operates in conjunction with the power flow analysis modules of CYME / CYMDIST 5.02 and higher versions of the program. With it, the power engineer can create contingency events and single- or multiple-outage scenarios, and compare results with the base case network data and connectivity.

Program Features

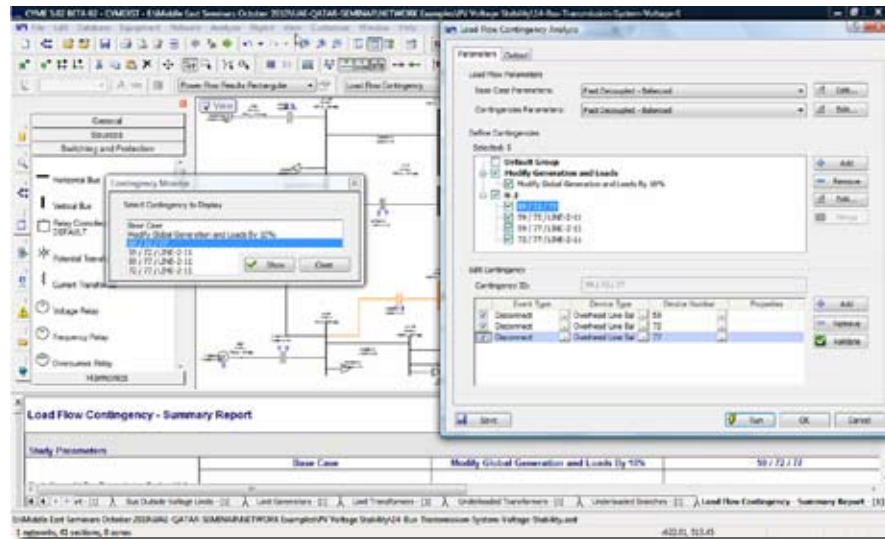
The analytical approach used by the Load Flow Contingency (N-p) module is the same as the power flow module of CYME / CYMDIST. In other words, the contingency analysis produces full AC power flow solutions with no DC approximations. The module features the sequential solution of all contingencies in a single run.

Analytical Capabilities

The Load Flow Contingency (N-p) module is structured so that an unlimited number of “what-if” scenarios, without having to modify the base case data and connectivity, can be included in a given contingency study. All system modifications related to a contingency refer to the base case network. Several contingencies can be concurrently defined to represent a network operation adverse scenario.

This includes the following:

- Modify loads globally, individually or by zone
- Modify generation globally, individually or by zone
- Connect and disconnect sections
- Modify shunts
- Add and remove induction and synchronous motors



Load Flow Contingency (N-p)

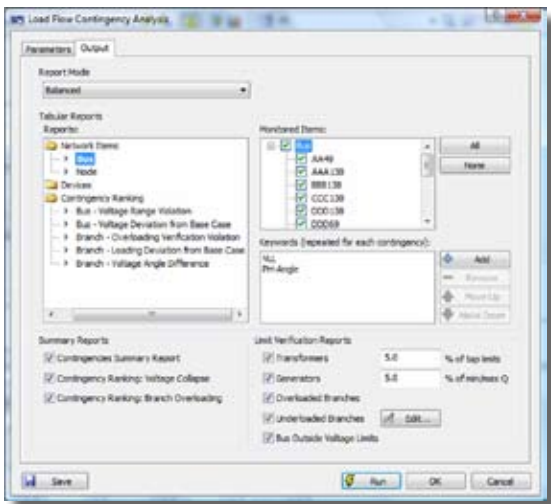
Create contingency events and scenarios, and compare results with the base case network data and connectivity.

Contingency N-1, N-2, N-3

With this option, you can define a group of single-, double-, or triple-section outage contingency studies. The network sections can be selected along with the combination of up to three elements per contingency. The program will create the desired group automatically, including the corresponding studies.

Contingency Ranking

This feature allows you to add or eliminate contingency indexes (ranking) to the tabular report. This contingency ranking methodology is for the automatic ranking, selection of contingency cases and for the identification of the most severe contingencies.



CYME International (part of Cooper Power Systems)

1485 Roberval, Suite 104
St-Bruno, QC Canada J3V 3P8
P: 450.461.3655
F: 450.461.0966
P: 800.361.3627 (Canada and USA)

www.cyme.com | www.cooperpowereas.com
info@cyme.com

COOPER Power Systems