



Protective Device Coordination with CYME and CYMDIST

The fully integrated TCC module introduced with CYME / CYMDIST 5.02 allows power engineers to perform analyses requiring protection data and design their coordination scheme on one single software platform. The CYMTCC device database available to the module includes over 15,000 devices; which is equivalent to more than 100 000 curves of North American, European and Asian manufacturers.

Program Features

While the CYMTCC software is a stand-alone application, its installation with CYME or CYMDIST allows the user to access coordination functions and thus perform directly from the CYMDIST or the CYME interface analyses requiring protection data and design coordination schemes on a single platform.

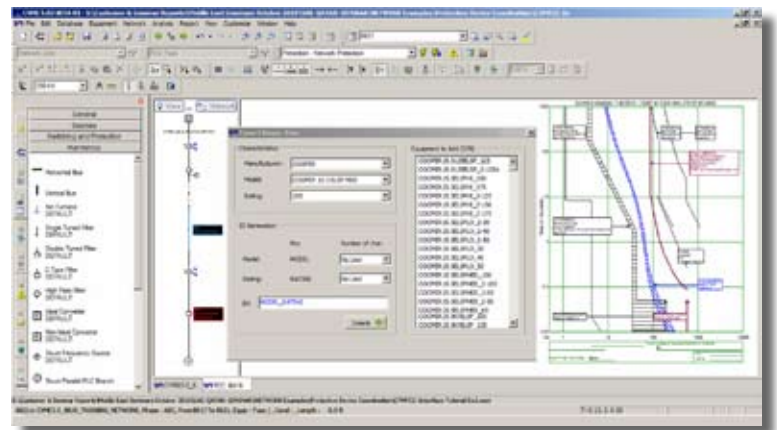
The main CYMTCC features thus available are:

- A view that shows time-current plot to visualize fuses, relays, circuit breakers, motor starting, cable and transformer damage curves.
- Protection and coordination analysis functionality to determine the reach, loading and coordination of protection.

Protective Device Time-Current Plots

- Coordination path selected and highlighted on the network one-line diagram
- Seamless interface to the CYME / CYMDIST power flow and short-circuit analysis modules
- Device loading, minimum and maximum short-circuit levels are automatically calculated and immediately available to the protection coordination functionality

- Generation of time-current curve plots and device setting reports using any of the 15000 devices stored in the library
- Curves plotting on standard Keuffel & Esser log-log forms, or on plain paper
- One-line diagrams or time-current curve plots export to files for inclusion in reports
- Capability to examine and change the settings of any device at any time
- Coordination margins measurement on-screen using the mouse or the Device Margin function
- Control over details such as current scale, plotting voltage, title block, curve colors, line thickness and device identification



Protective Device Coordination with CYME and CYMDIST

Perform analyses requiring protection data and design your coordination scheme on one single software platform.

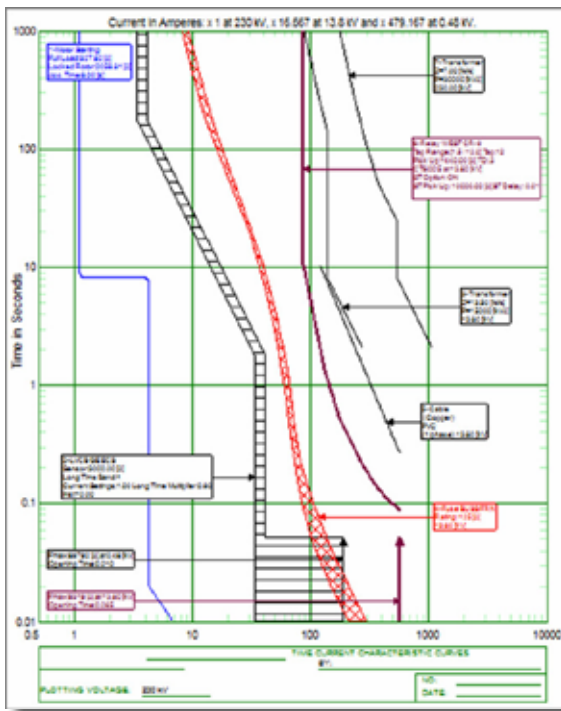
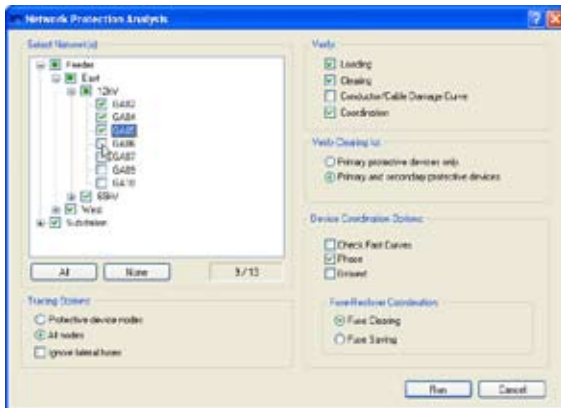
Protective Device Coordination Analysis

The protective device coordination analysis functionality can be used to verify whether the device curves in the study are coordinated, according to user-defined criteria.

The analysis can be done on a single feeder, on several feeders, or on the entire network. The user can generate the desired reports for the protective devices on any or all feeders in the network.

The main analysis capabilities include:

- Verification of the Coordination Criteria between successive pairs of devices, and report on any devices whose adjusted curves intersect within the range of minimum to maximum fault current
- Protective “reach” for each device
- Device loading as a percentage of its rated current under normal operating conditions
- Device clearing as to whether any protective device exceed its maximum permitted clearing time
- Primary and secondary protective devices
- Fuse clearing or saving option
- Transformer and cable damage curves, and motor starting curves



CYME International (part of Cooper Power Systems)

1485 Roberval, Suite 104
St-Bruno, QC Canada J3V 3P8
P: 450.461.3655
F: 450.461.0966
P: 800.361.3627 (Canada and USA)

www.cyme.com | www.cooperpowereas.com
info@cyme.com

COOPER Power Systems