



**SUPPORT TOOLS FOR REAL-TIME OPERATIONS**

- Advanced Switching Plan
- Contingency Analysis
- Reliability Assessment
- Switching Optimization
- Fault Locations
- And more...

**CYMDIST- ASP Advanced Switching Plan**

**CYMDIST-ASP** is a module that directs fast and optimized electrical switching procedures to support your Outage or Distribution Management System (OMS/DMS) in restoring the service to affected customers.

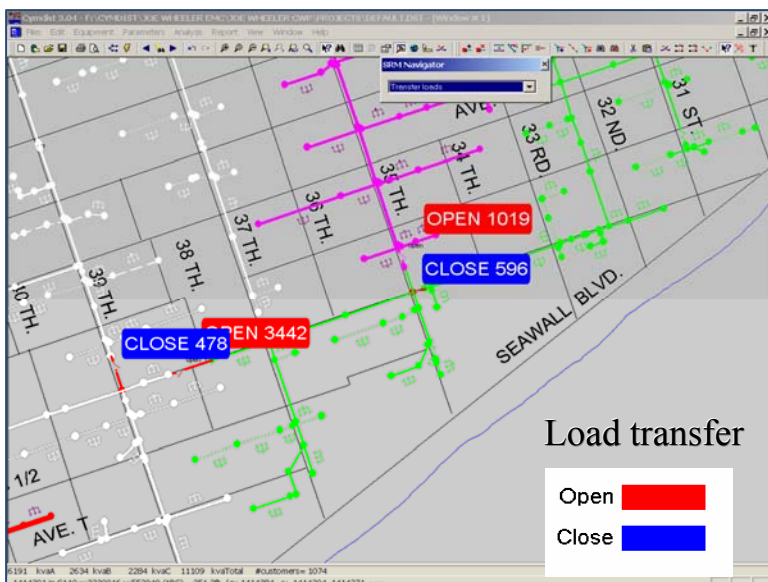
**Program Features**

This innovative software application creates automatically an advanced switching plan to restore electrical service following an outage event of virtually any size. **CYMDIST/ASP** can be integrated with your Distribution Management System (DMS/NMS/OMS). It is based on restoration "best practices", assisting the Distribution Control Center Operators to build up the "best restoration" scenario directly from their Console.

**CYMDIST/ASP** runs transparently in the background, keeping into computer memory the dynamic status of the actual network model to isolate affected zones and transfer priority customers to energized circuits. It can make provision for capacity on the available circuits to pickup the load. It displays the switching plan on the maps, and provides switching orders to reenergize affected zones and establish the best strategy to bring the network back to its normal operating conditions.

**CYMDIST/ASP** uses a real-time electrical model and a multi-objective function to find the single, best restoration plan, not a long list of options. The electrical model is shared with the popular **CYMDIST** distribution planning software. The shared model contains normal loadflow model components, actual switching equipment status, customer counts, and priority customer locations.

Considerable cost savings can be achieved when **CYMDIST/ASP** is used to support real-time operations in their efforts to bring the service back as quickly as possible, still maintaining the electrical network within acceptable operating conditions and avoiding permanent damage to the equipment.



Pickup Load By Transfer				
Switch No.	Action	Reason	Pickup Load After Damage R	
1019	Open	Split load	3445	Close
1018	Close	Transfer load	234	Close
15325	Close	Transfer load	267	Close
574	Open	Split load	480	Close
17887	Close	Transfer load	5363	Close
11953	Close	Transfer load	11952	Close

*Field crews are provided with switching orders and maps*

**CYMDIST/ASP'** integrated solutions solve multiple problems that are essential to build a responsive and dependable switching/load restoration plan:

**1. Automates “Best Practices” restoration methods**

- **ASP** creates optimum switching plan within minutes ready for review.
- Outages are displayed graphically to ease referencing by operators.
- **ASP** recommendations guide switching of customers to working circuits.
- Gets customers online quicker.
- Plans load transfer switching on circuits very remote from the outages.

**2. Advanced Switching Plan provides fastest restoration**

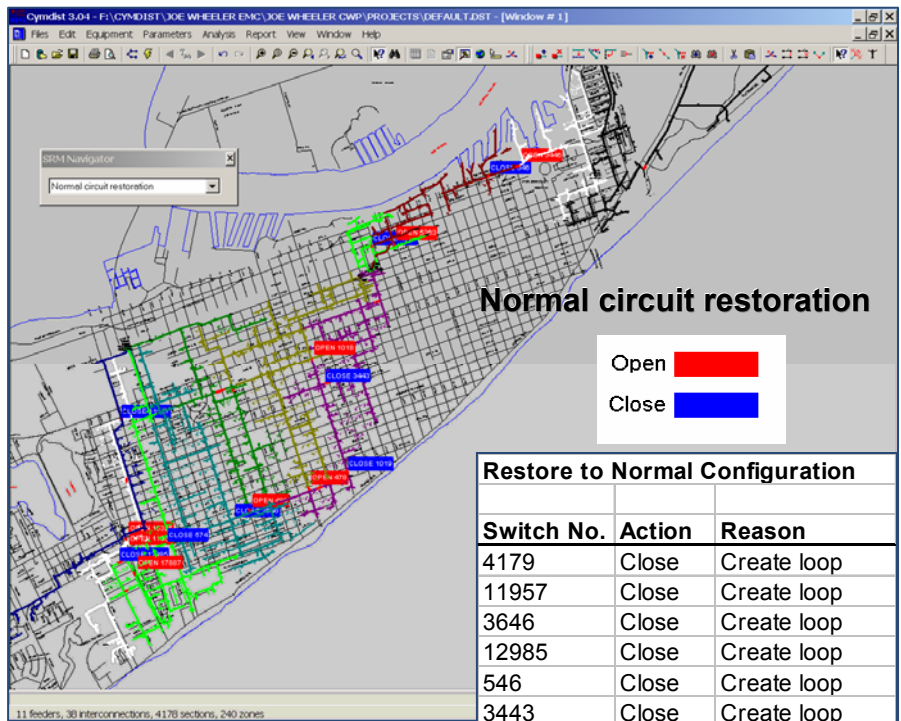
- Restoration is based on highest priority customers.
- **ASP** assists operators in connecting available facilities.
- Isolates zones affected by outages using switching.
- Calculates load on new circuits and prevents overload on circuit or substation.
- Transfers load to available circuits to unload circuits in outage areas.
- Reserves circuit capacity in order to pickup highest priority customers as switching is taking place.

**CYMDIST/ASP** inherits its remarkable functionality from **CYME'** power engineering Distribution Analysis program **CYMDIST** that is used on a daily basis by thousands of electrical engineers and planners worldwide.

The **ASP** functions are accessed through libraries adhering to the MS Windows standard **Component Object Model (COM)** interface. It offers great scalability perspectives to address present and future needs.

**CYME'** dedicated team of professionals is ready to assist your company in integrating its field proven power engineering Components and Modules into your specific environment to leverage your business processes. From the early stage of specification down to the roll out of the system, **CYME** provides the support and the software services, as required, partnering with your technical staff to implement solutions that will meet your expectations.

*Back-to-normal switching procedures*



Restore to Normal Configuration		
Switch No.	Action	Reason
4179	Close	Create loop
11957	Close	Create loop
3646	Close	Create loop
12985	Close	Create loop
546	Close	Create loop
3443	Close	Create loop
1019	Close	Create loop
574	Close	Create loop
1018	Open	Transfer load
15325	Open	Transfer load
17887	Open	Transfer load
11953	Open	Transfer load
478	Open	Transfer load
480	Open	Transfer load
5363	Open	Transfer load
3446	Open	Transfer load



**Canada & International**  
 1485 Roberval, Suite 104  
 St-Bruno, QC Canada J3V 3P8  
 Tel. (450) 461-3655  
 Fax (450) 461-0966

**U.S.A.**  
 67, South Bedford St, Suite 201 East  
 Burlington, MA 01803-5177 USA  
 Tel (781) 229-0269  
 Fax (781) 229-2336

**U.S.A. & Canada**  
 1-800-361-3627  
 www.cyme.com  
 info@cyme.com