



## Advanced Project Manager

The Advanced Project Manager is the CYME extensive tool that supports the collaborative and detailed preparation of time-based projects that can span several years. This module is included in the Network Forecaster and is also available as a stand-alone.

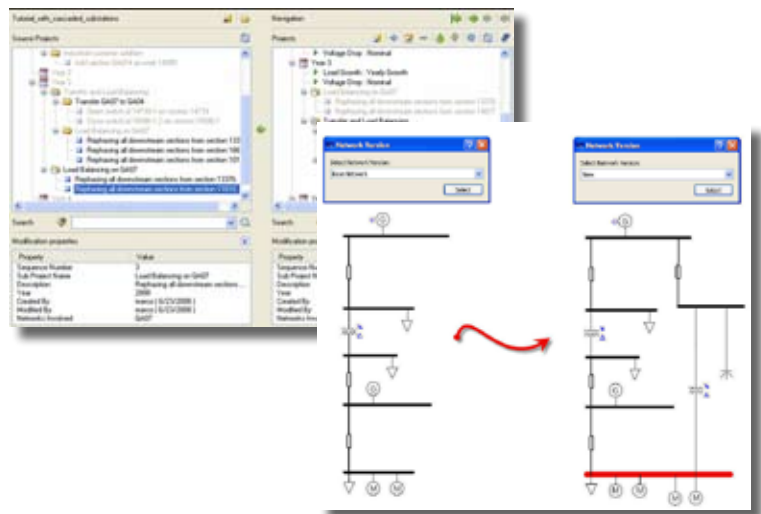
### Program Features

- Project editing: adding time-based changes, grouping modifications, etc.
- Time positioning: select a moment (before or after any network change) to see the network conditions at that specific moment.
- Migration tool: allows transferring forecasts on the updated network from one year to the next.
- Scenario mode: implement all alternative solutions and compare the benefits of each solution.
- Multi-level structure: share the project database which holds all modifications so multiple users can collaborate on finding the optimal solutions to the network problems through the study of the same project scenarios.
- Validation process: verifies the series of changes and the order they are applied in order to always have a valid project.

### Network Versioning

Network Versioning is a functionality made possible with the availability of Advanced Project Manager, and allows the creation of different versions of the same network within the same database.

With Network Versioning, users can take groups of modifications in the Advanced Project Manager to make different versions of the networks in the database with which they can base their projects on.



**CYME International**  
 ( part of Cooper Power Systems)  
 1485 Roberval, Suite 104  
 St-Bruno, QC Canada J3V 3P8  
 info@cyme.com

P: 450.461.3655  
 F: 450.461.0966  
 P: 800.361.3627 (Canada and USA)