



## Seminars - Dubai, Abu Dhabi and Qatar

CYME International which is now part of Cooper Power Systems is pleased to announce the release this fall of its new Generation of CYME Power Engineering Software.

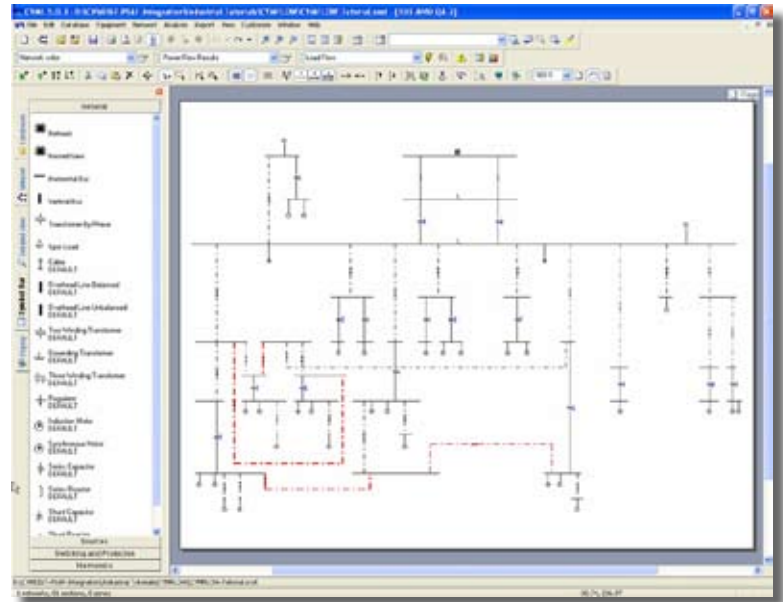
CYME 5.0 features a greatly enhanced interface with almost unlimited customization options coupled with powerful field proven algorithms that have been serving the T&D industry for 25 years. This new software will become our flag ship for the coming years and will be a major upgrade to the PSAF Software.

### The Seminar highlights the CYME 5.0 graphical user interface and major analysis capabilities

#### CYME Power Engineering Software 5.0 - Network Editor

CYME 5.0 is provided with a greatly enhanced Graphical User Interface that provides the user with much greater flexibility in creating the one line diagram of the network as well as providing almost unlimited options to customize the displays and reports. This new editor is one of the most user friendly and most powerful one available on the market today.

- Introduction of the concept of a Workspace.
- Drag-and-drop a device onto the workspace without the need to connect to a bus or node.
- Enhanced protective device representation.
- Multiple Undo and Redo capabilities.
- Intermediate Nodes.
- Enhanced Snap-to-grid functionality.
- Nested Networks.
- Group properties and commands.
- Display options to customize the look and feel of the network one line diagram.
- Customization of one line diagram results and reports with built in keywords.
- Database of equipment and Manager.
- Equipment electrical parameter estimation functions.
- Network symbol editor.
- Customer load model library.
- Import of existing PSAF studies.



## Seminars - Dubai, Abu Dhabi and Qatar

CYME 5.0 graphical user interface and major analysis capabilities.

### Power Flow Analysis

CYMFLOW, the analysis module for the power flow analysis in three-phase electric power networks.

- Load flow parameters .
- Customer classes and load models.
- Controls.
- Loading limits.
- Customization of layers and reports.

### Short Circuit Studies

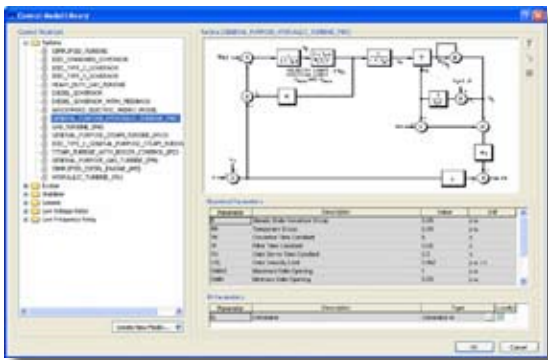
CYMFAULT, the analysis module for Short Circuit studies for the proper selection of protective devices.

- Conventional.
- ANSI and IEC standards.
- Summary on all buses.
- Fault a bus.
- Rotating machines contributions.
- Customization of layers and reports.

### Motor Starting

The analysis module dedicated for dynamic motor starting.

- Motor name plate data.
- Equivalent circuit and estimation methods.
- Motor load characteristics (pumps, blowers etc.)
- Starting methods in network settings.
- Analysis menu settings.
- Direct in line motor starting.
- Plotting of results.
- Starting assistance and comparison of results.



### Harmonic Studies

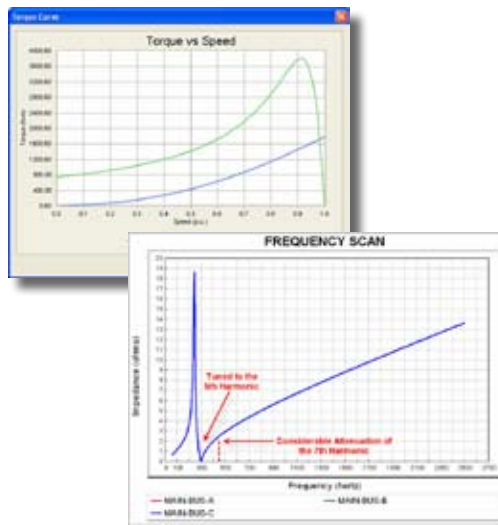
CYMHARMO, the analysis module for harmonic studies due to the presence of non-linear drives.

- Variable frequency drive.
- Harmonic analysis parameters.
- Voltage and current distortion.
- Frequency scan.
- Interpretation of results.
- Installation 5th harmonic single tuned filter.

### Transient Stability Analysis

CYMSTAB, the analysis module for Transient Stability when the system is subjected to a disturbance.

- Summary of transient stability analysis.
- Synchronous and induction machine equivalent circuits.
- Control model library and functionality.
- Network settings of machines.
- Transient stability analysis parameters.
- Monitoring of equipment.
- Demonstration of transient events:
  - Fault application and clearing
  - Starting induction motor
  - Loss of utility supply
  - Load shedding schemes.
- Interpretation of graphical results.



### CYME International

1485 Roberval, Suite 104  
St-Bruno, QC Canada J3V 3P8  
P: 450.461.3655  
F: 450.461.0966  
P: 800.361.3627 (Canada and USA)

www.cyme.com | www.cooperpowereas.com  
info@cyme.com