



Upcoming Events

The next CYMDIST 5.0 and CYMTCC 5.0 training is scheduled to take place next March in Atlanta, Georgia, USA.

- See www.cyme.com/courses/softwaretraining/ for details.

Visit us at:

- Middle East Electricity 2010 (at Cooper Power Systems booth), February 9 to 11, Dubai, United Arab Emirates
- TechAdvantage, (at Cooper Power Systems booth), February 11 to 15, Atlanta, Georgia, USA
- DISTRIBUTECH, (at Cooper Power Systems booth), March 23 to 25, Tampa, Florida, USA
- IEEE PES Transmission and Distribution (at Cooper Power Systems booth), April 19 to 22, New Orleans, Louisiana, USA
- CIGRÉ, August 22 to 27, Paris, France

Mark your calendar for the 2010 CYME Users Group Activities !

The CYME Users Group is the prime event where CYMDIST and CYMTCC software users from distribution utilities all over the world can connect and exchange ideas and experiences.

Cooper Power Systems is pleased to announce that the next CYME Users Group will be held in Montreal, Canada, from June 15th to June 17th. Our team will present the most recent developments and the upcoming enhancements of the CYMDIST power engineering software for distribution analysis and the CYMTCC software for protective device coordination.

The presentations and training sessions will cover various subjects of interest to the distribution engineer, and the participants will have a hands-on opportunity to try the most recent features of CYMDIST and CYMTCC. Also on the agenda is the user forum and the popular one-on-one meetings that encourage participants to openly share about their experiences

and challenges with other users and the CYME engineers. The program is complemented by an additional training day on June 18th aimed at learning about more specialized topics.

Those registered as CYME users will be e-mailed more details in a few weeks.

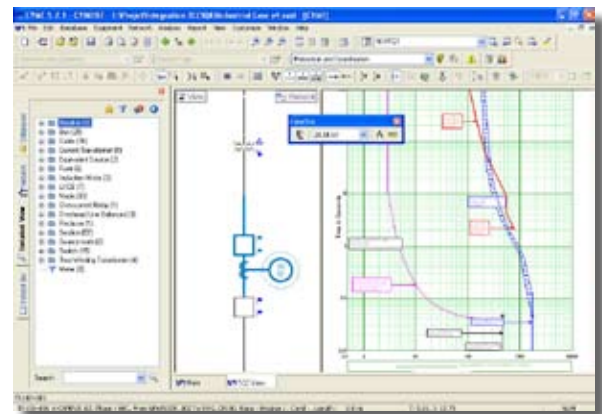


Time-Current Curves Integrated with the CYMDIST Application

In the coming weeks and months, we will release a number of new and enhanced capabilities that expand the features and facilities of the CYME CYMDIST module and make it more convenient for daily use.

Among these improvements, a fully integrated Time Current Curve module featuring a number of protective device coordination facilities to help protection planners design their coordination schemes directly within CYMDIST. More than 15000 devices from North American, European and Asian manufacturers will be available in the software. The new capabilities will allow for modeling more advanced protection schemes with equipment such as current transformers, potential transformers, overcurrent relays or motor relays. In addition, the user will be able to select and/or create the required device on screen, set the parameters as needed, and visualize and review the related time-current curves. The devices parameters will be saved and used with the CYME network data for a clean synchronization.

This integration will be immediately useful for industrial and distribution engineers performing power engineering analyses requiring protection data, such as protective device coordination, arc flash hazards evaluations (with the Arc Flash module), load flow and short-circuit simulations. More advanced coordination studies can be performed using CYMTCC.



Beyond the Software Business: Engineering Consulting Services

When you succeed in developing one of the best toolboxes for power engineering studies it is because you understand not only power systems but also the users, the environment they are working in, and the challenges they are facing. Our commitment towards our customers goes beyond the expected high quality software support.



In order to meet the increasing level of requests from customers, Cooper's CYME engineering consulting services team was expanded in 2009 with former utility and consulting engineers joining it, resulting in a rare combination of CYME tools expertise and practical field experience. As part of the Cooper Power Systems' Energy Automation Solutions group, the CYME engineering consulting team enjoys a unique combination of knowledge and resources that allows handling uncommon studies for customers who don't have the time to develop the specific expertise needed or don't require such expertise on a regular, recurring basis.

Working with the Cooper's CYME software development and support team, we can also help implement or improve study processes, provide coaching, and build templates for studies. We now offer our customers a wide range of studies ranging from transient phenomenon to strategic investment

plans. We can also provide ad hoc resources to complement existing teams following a loss of expertise, for example.

In 2009, we started offering utilities a complete turn-key solution encompassing network modeling, initial network performance diagnostics and pertinent software to assist utilities in getting started smoothly in the CYME environment. Such a solution provides utilities with limited technical resources an easy way to fine-tune their current practices and rapidly benefit from the implementation of our tools.

As part of Cooper Power Systems' Energy Automation Solutions group we are incorporating new and emerging technologies in our scope of expertise. This provides us with the opportunity to broaden our studies with the assessment of their impact on the network that considers the opportunities in asset and load management, reliability improvement as well as voltage and losses optimization. We are privileged to have been involved in projects at a number of innovative utilities.



Read more: www.cyme.com/services/SCS/

Learn about our Software: CYME Web Seminars

Cooper is now offering web seminars that highlight the powerful new features of our CYME 5.0 software. These live seminars are interactive and conducted by a CYME engineer allowing you to ask your questions and receive immediate feedback.

Each seminar cover a different and specific engineering analysis topic.

See the current schedule on the CYME web site:

www.cyme.com/courses/WebMeetings/

CYME International (part of Cooper Power Systems)

1485 Roberval, Suite 104
St-Bruno, QC Canada J3V 3P8
P: 450.461.3655
F: 450.461.0966
P: 800.361.3627 (Canada and USA)

www.cyme.com | www.cooperpowereas.com
info@cyme.com