



Special Points of Interest:

- CYMDIST 4.7 and CYMCAP 4.5 have just been released. See highlights in this issue.
- The new CYMTCC 4.5 R.7 features improved Arc Flash output flexibility.
- The next CYMDIST-CYMTCC training will be held in Atlanta next March. Register on our web site.
- Visit us at:
 - DISTRIBUTECH 2007, February 4 to 6, San Diego, California, USA.
 - Middle East Electricity 2007, February 11 to 14, Dubai, UAE.
 - TechAdvantage 2007, March 17 to 20, Las Vegas, Nevada, USA.
 - CIRED 2007, May 21 to 24, Vienna, Austria.

Mark your calendars for the CYME Users Group 2007 !

The next CYME Users Group is scheduled for the last week of June, with a 5-day program encompassing presentations and workshops on the CYMDIST, CYMTCC and CYMCAP latest advances.

During the CYMDIST-CYMTCC Users Group CYME will present the latest advances on its software. Various sessions are planned to exchange on knowledge and practice, and explore

new ideas. CYMDIST users will get a head start on the new CYMDIST 4.7 functions and features through a one-day training program.

The CYMCAP Users Group features specialized presentations, followed by a full day dedicated to training. Sessions on steady state and transient simulations are planned along with practical demonstrations of the advanced CYMCAP applications.

The agenda is complemented by a one-day technical engineering course on Power Quality and System Harmonics.

On-line registration will be available soon.



CYME to Conduct a Major Distribution System Study for Inland Power and Light Company

Inland Power has enacted a new process for identifying, evaluating, designing, determining costs, and approving capital projects. They have deferred to CYME for assistance in the areas of creating and updating the system model, analyzing the system, and making preliminary recommendations as to ways to improve system performance.

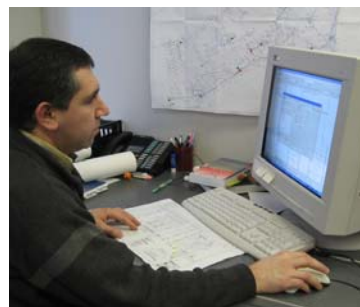
The studies entail the creation of a specified set of system models provided by Inland Power including correcting any data errors in the raw data files, update the system models to reflect the completion of the planned construction work and then perform a set of analyses for the peak load season of each model.

Studies performed by CYME include:

- Load balancing and switching optimization to maximize current asset utilization.
- Load growth and voltage drop studies for consecutive three years using a specified growth rate for each substation area to predict system performance.
- System protection and coordination studies and fuse size recommendation for a large part of the distribution system.

Once the model is complete and each study is performed, CYME will identify areas needing attention based on Inland Power

criteria, determine possible solutions, analyze the possible solutions to determine the best long term fix, and make recommendations as appropriate. Recommendations for changes will consider voltage levels, conductor and equipment loading levels, load growth, and system reliability aspects.



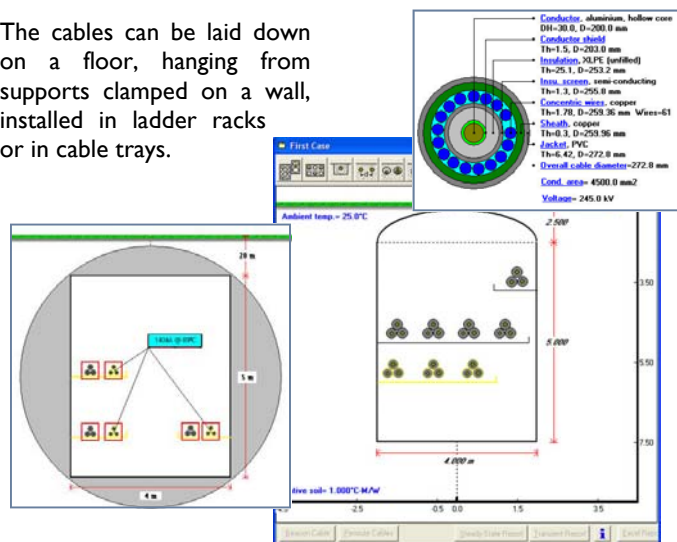
CYMCAP Cables in Tunnels

We are pleased to announce the release of CYMCAP version 4.5 with continuous improvements. The highlight of version 4.5 is the release of the Cables in Tunnels add-on module, which supports a large variety of cable arrangements for single core (flat formations or trefoils) and three-core cables.

- The calculation of the temperature, steady state, cyclic and transient ampacity of equally loaded cables installed in unventilated tunnels.
- A large variety of cable arrangements are supported for single core (flat

formations of trefoils) and three-core cables.

- The cables can be laid down on a floor, hanging from supports clamped on a wall, installed in ladder racks or in cable trays.



Introducing CYMDIST 4.7

CYMDIST 4.7 comes with numerous refinements in the modeling of motors, transformers, customer loads and generators. With these enhancements, users may now perform advanced analysis of distributed generation with the enhanced modeling of induction generators, synchronous generators and electronically-coupled generators in normal operation mode or in islanding mode.

The modeling of substations and secondary networks is now even more intuitive with the new automatic generation of the one-line diagram that simplifies the representation of complex interconnected networks.

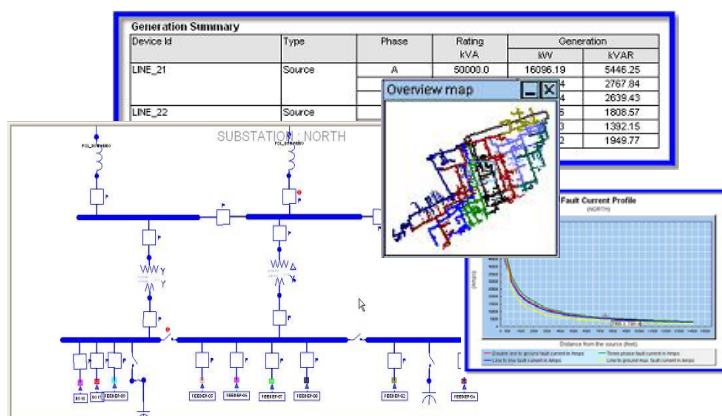
Navigating through your networks has never been easier

with the addition of the new device view, the overview map, the user defined filters and the one-line diagram hyperlinks.

CYMDIST 4.7 also offers several enhancements to the customization of the one-line diagram, the results and the reports providing

the information to users where, how and when they need it.

CYMDIST 4.7 has just been released, and is available in English, French and Spanish.



CYME International T&D is a world-class Power Engineering Solutions provider with an established reputation for customer responsiveness and technical expertise. Our solutions stand behind thousands of T&D projects in over 100 countries around the world.

CYME offers an extensive line of Power Engineering Software that feature some of the most advanced analysis tools for transmission, distribution and industrial power systems. We offer comprehensive services in order for our customers to fully benefit from the CYME applications in their specific IT environment and to address their engineering analysis needs. This includes engineering studies, assistance to integration and comprehensive training.

Canada & International
1485 Roberval, Suite 104
St-Bruno, QC Canada J3V 3P8
Tel. (450) 461-3655
Fax (450) 461-0966

U.S.A.
67, South Bedford St. Suite 201 East
Burlington, Ma 01803-5177 USA
Tel (781) 229-0269
Fax (781) 229-2336

U.S.A. & Canada
1-800-361-3627

www.cyme.com
info@cyme.com

CYME
INTERNATIONAL T&D